



INSECTS

at neal smith national wildlife refuge

DRAGONFLIES + DAMSELFLIES

(Order Odonata)



- four long, veiny wings
- narrow body
- large eyes
- tiny antennae
- long, skinny body shape
- often found in the air, usually near wet areas or bodies of water

TRUE FLIES

(Order Diptera)



- only two wings
- eyes often very large
- usually short antennae
- sucking mouthparts sometimes visible
- often found in the air or on and around warm-blooded animals

BUTTERFLIES, SKIPPERS + MOTHS

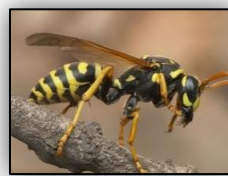
(Order Lepidoptera)



- four large, dusty/scaly wings
- thick body
- have longer antennae
- many young have silk glands to make cocoons or other shelters
- often found in the air or on flowers

ANTS, BEES + WASPS

(Order Hymenoptera)



- often have black + yellow warning patterns
- when winged, there are four present
- thin waists
- many have stingers
- some winged, but not all
- often found on flowers, in and around mounds, flying or crawling

TRUE BUGS (Order Hemiptera)



- wings folded in X pattern flat on back
- antennae usually obvious, long
- many have triangular shaped, flattened bodies
- often found on leaves of trees and bushes and in grasses

BETTERLES (Order Coleoptera)



- wings fold to form straight line visible down back
- four wings – two form hard and protective “shell”, the other two are used for flying
- often found on flowers, leaves, on the ground and in the air

CICADAS, HOPPERS, APHIDS + OTHERS (Suborder Homoptera)



- most hold wings roof-like over body
- antennae often short
- aphids are tiny and pear-shaped
- often found on bushes, trees or in grasses

GRASSHOPPERS, CRICKETS + KATYDIDS (Order Orthoptera)



- very long hind legs for jumping
- wings accordion-like
- green, brown or grey – excellent camouflage
- “sing” by rubbing their legs together
- mainly found in grasses or on the ground

What makes insects special?

Well, they all have...

- six legs
- three body parts
- antennae they use to smell
- skeletons on the outside of their bodies (called *exoskeletons*)
- no backbone (they are *invertebrates*)

What other reasons can you think of?