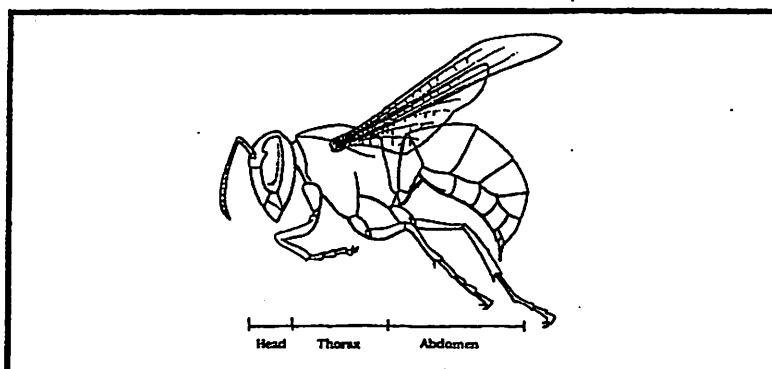


# Common Prairie Insect Orders

## What Makes a Bug an Insect?

Insects have wings, eyes, mouthparts, antennae, six legs, and three body parts: a head, thorax, and abdomen.

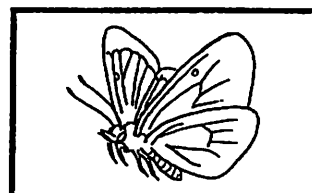


## Common Insect Orders

It is easiest to identify insects first by Order, which is one level of organization in today's scientific classification system. All 26 insect Orders are found on the prairie. The following are the most common Orders of insects students will find on the prairie.



- True Bugs**
- many sizes & shapes
  - resemble beetles, but don't have a hard shell
  - "x" on the back, rather than a straight line



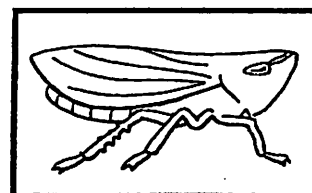
- Butterflies & Moths**
- two sets of large wings
  - wings are covered by powdery scales



- Bees & Ants**
- four wings
  - thin "waist"



- Flies**
- small antennae, large compound eyes
  - two wings



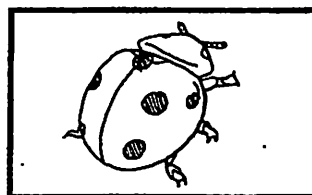
- Hoppers**
- wings form a "tent"
  - many species hop; strange and beautiful



- Grasshoppers**
- two long jumping legs
  - long body & antennae
  - up to four wings



- Dragonflies**
- long, slender body
  - two pairs of wings
  - found near water



- Beetles**
- hard shell divided by a straight line
  - a total of four wings, two flight wings are hidden beneath the shell